

EnergyEfficient

EcoLogical

SolarPowered

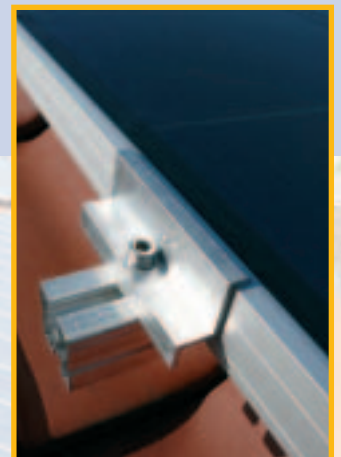
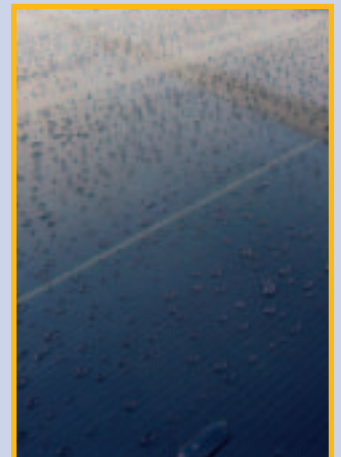
BIOSOL Uni Pro

The unique premium module for all mid- to large-sized roofs
Suitable for On-Roof Installation and Open Surfaces

BIOSOL Uni Pro consists of a *UNI-SOLAR*[®] laminate with cells featuring the innovative Triple-junction technology. This technology guarantees high yields even with diffuse radiation and unfavourable roof orientation (east- or west-oriented roofs) and inclination. The laminate framing is done manually at BIOHAUS, with a strong anodised aluminium frame.

Thus the module is multi-purpose and extraordinarily robust.

- long-lasting due to top quality materials
- special soil-resisting TEFZEL surface - noticeably cleaner than glass surfaces
- almost indestructible: no glass - no risk of breakage
- guaranteed optimum yields due to Triple-junction technology
- secure and easy electric connection by means of MultiContact connectors
- combines design and ecological power generation
- homogenous design of the module field
- quick amortisation due to statutory feed-in tariff (in Germany)



www.biohaus.de

BIOSOL Uni Pro

Electrical data*

Modul Class, Nominal Power (P _{MPP})	124	127	Wp
Nominal Voltage (U _{MPP})	30	30,2	V
Nominal Current (I _{MPP})	4,1	4,2	A
Open Circuit (U _{OC})	42	42,2	V
Short Circuit (I _{SC})	5,1	5,2	A
Temperature Coefficient of P _{MPP} (ΔP _{MPP})	-0,26	-0,27	W/K
Temperature Coefficient of U _{MPP} (ΔU _{MPP})	-93	-94	mV/K
Temperature Coefficient of I _{MPP} (ΔI _{MPP})	4,1	4,2	mA/K
Temperature Coefficient of U _{OC} (ΔU _{OC})	-160	-160	mV/K
Temperature Coefficient of I _{SC} (ΔI _{SC})	5,1	5,2	mA/K
NOCT (800 W/m ² , AM 1.5, 20°C)	45	45	°C

*at standard test conditions (1.000 W/m², Spectrum AM 1.5, Celltemperature 25°C). During the first 8-10 weeks of operation, electrical output exceeds specified ratings: Power P_{MPP} +15%, Open Voltage U_{OC} +11%, Short Circuit I_{SC} +4%.

Dimensions and weight data

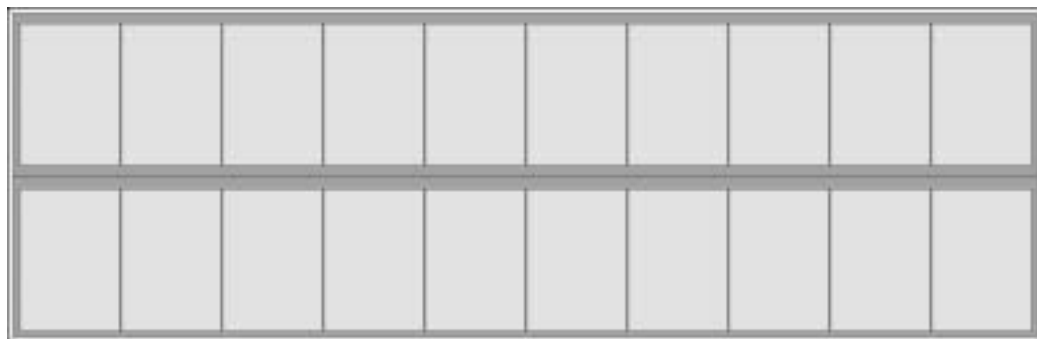
Length	2458	mm	mm
Width	791	mm	mm
Height	42	mm	mm
Weight	19,7	kg	kg

Quality features

Tolerance of Nominal Power	± 5%
Warranty	20 years to 80% of rated nominal power
Product guarantee	5 years
Max. System Voltage	1000 V

Construction features

Solar Cell	20 amorphe silicon tripele-junction solar cells, United Solar
Construction	laminates bonded on metal plate
Frontside	TEFZEL®, highly transparent ETFE-Polymer
Backside	coated metal plate
Junction Box	type of protection IP 65, two Schottky diodes across every cell
Connection Cable	2 x 0,5 m, MultiContact MC 3 system



BIOHAUS PV Handels GmbH
 Otto-Stadler-Str. 23c
 D-33100 Paderborn
 Tel. +49 5251-500500
 Fax +49 5251-50050-10
 pv@biohaus.de